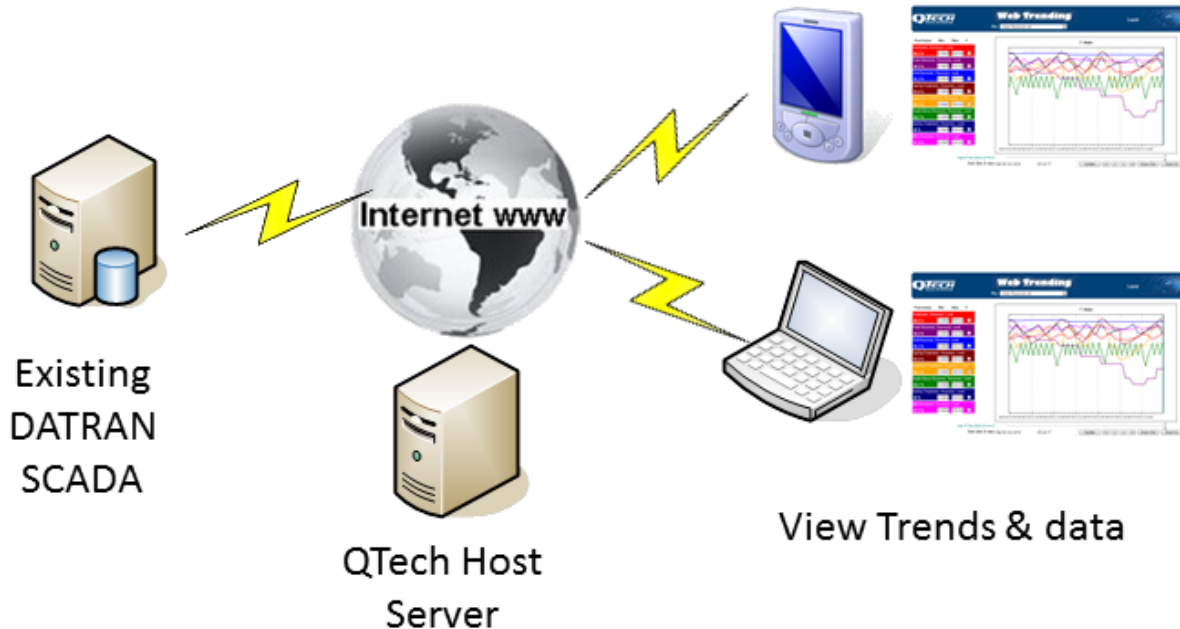


Hosted DATRAN Web Trending



DATRAN Web Trending allows existing DATRAN Trending plots to be viewed remotely on a web browser or smart phone from anywhere in the world.

“Hosted DATRAN Web Trending” is a web hosting service offered by QTech that provides you with safe and secure access to these trends, without the need to set up or manage internet servers through your IT department.

Unlimited authorised users can access the system and view system data from anywhere in the world.

The DATRAN Base Station needs secure access to the web for connection to the QTech Host Server which serves the external web users. This helps maximise system security as no user has direct web access to the SCADA system.

Key Features include:

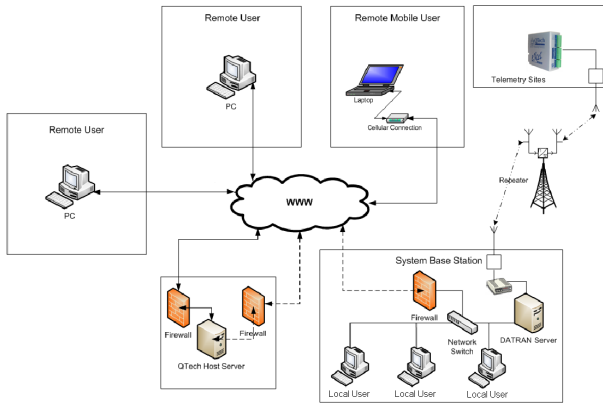
- Access SCADA trends from a PC/Laptop/Mobile device anywhere in the world with an internet connection
- Password protected login
- Multiple user capability, add and remove operators yourself through your web browser
- Data always loads on “today” to help you perform the most common tasks quickly
- Data values are displayed based on the time cursor, simply move the slider to the point of interest
- Fast and efficient operation

Key Benefits include:

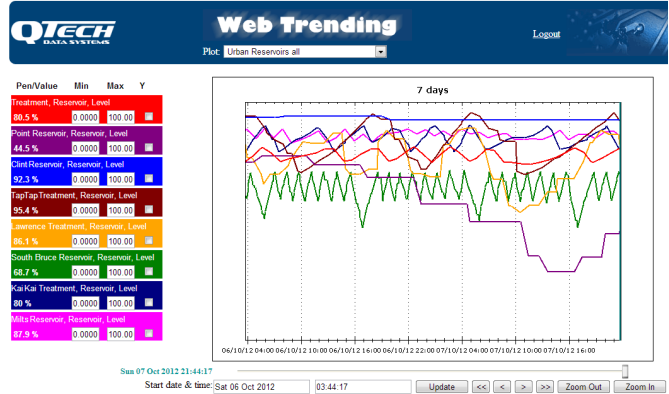
- Improved operational efficiency and greater levels of system visibility
- Low initial cost of implementation with a monthly subscription
- Unprecedented system data sharing abilities

Please contact us to discuss how we can provide an internet based DATRAN trending solution for you.

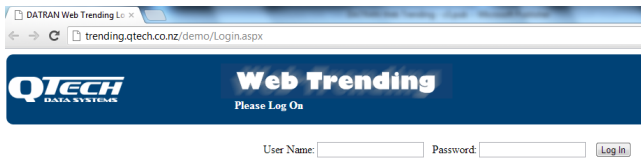
Detailed System Architecture



Typical Trend



Simple website log in



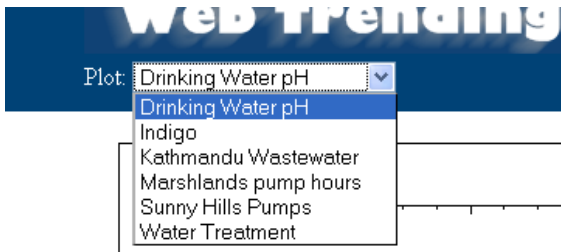
Add and manage your own users/passwords

Clear display of current values

Pen/Value	Min	Max	Y	
Drinking Water Treatment, Treatment, p	6.75 pH	2	5	<input checked="" type="checkbox"/>
Drinking Water Treatment, Treatment, p	7.75 pH	4	0	<input type="checkbox"/>

Tick the "Y" box to display vertical axis scale

Drop down selection of all trends



Trend navigation by date or scrolling

Start date & time: Sat 06 Oct 2012 03:44:17

Plots always load with today's data, and the time cursor is on the right of the screen so the latest value is shown in the pen properties pane on the left. Use the slider (above the zoom buttons) to reposition the time cursor on points of interest.

