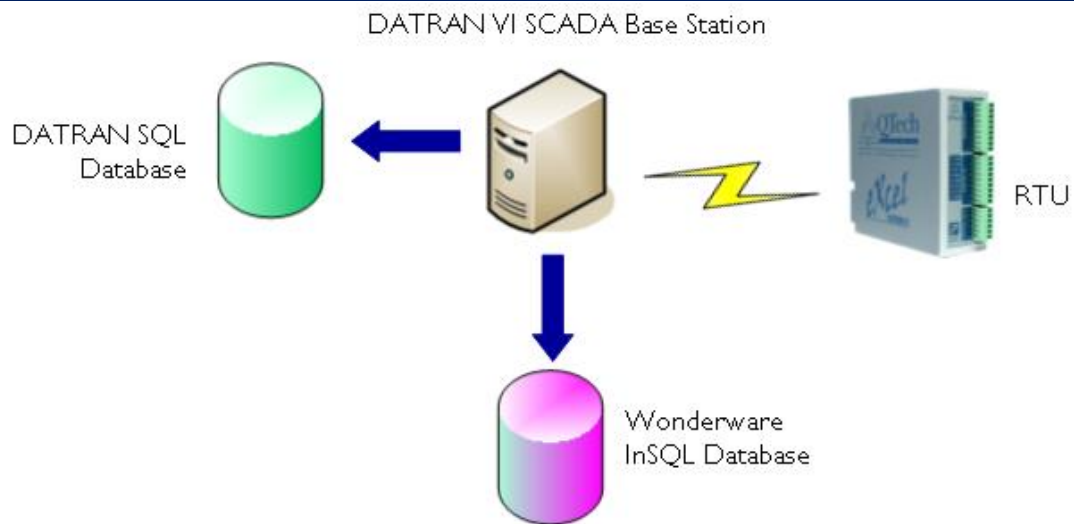


## RTU Data Logging - InSQL Integration



DATRAN VI SCADA Base Stations have traditionally logged historic data to the DATRAN database, which is a generic Microsoft® SQL database. The DATRAN software packages, Historical Trending and Reporting, have been used to display and manipulate this data.

DATRAN's RTU Data Logging is a powerful feature that allows RTUs in the field to log data which is then periodically retrieved over the existing communication channels.

This logged data is easily integrated into the DATRAN database via the Historic Data Interface software, however, this data is not in chronological order with respect to existing data in the database and is sometimes referred to as "late data". This can cause problems for databases other than the standard DATRAN database.

Wonderware's Industrial SQL (InSQL) is a proprietary type of database with extensions over Microsoft® SQL Server. With the deployment of InSQL, the integration of non-chronological "late data" requires an alternative approach.

A new DATRAN service called "**InSQL Connectivity Module**" (InSQLCM) provides the mechanism to stream data into the "Fast Load Folder" of InSQL. Integrating DATRAN RTU Data Logging into InSQL allows the Active Factory suite of products to be utilised for the display, manipulation and reporting of the data.

### Key Advantages Include:

- Ability to Log non-chronological data to InSQL and/or the DATRAN database
- Integrate DATRAN RTU Data Logging into Wonderware as extensions to the existing system
- Native DATRAN InSQL configuration provides a seamless and elegant solution
- Enables a common repository for multiple sources of system data

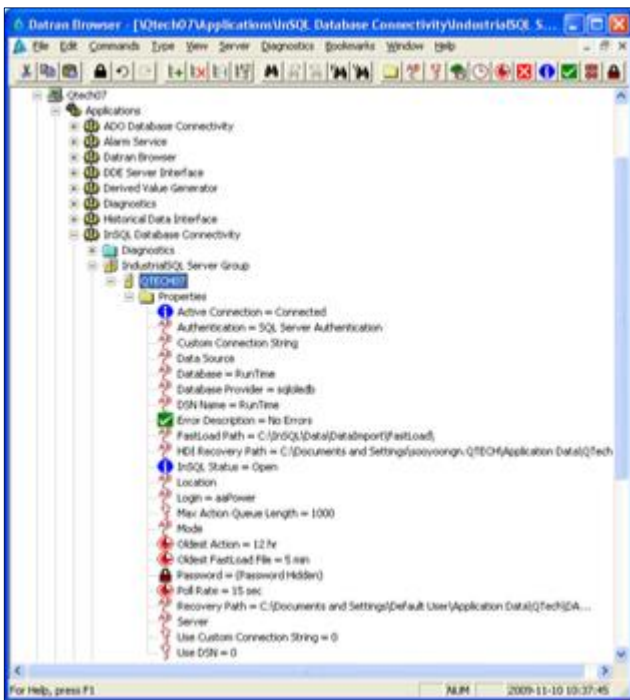


The InSQL Connectivity Module is compatible with DATRAN VI Version 6.64 and above.

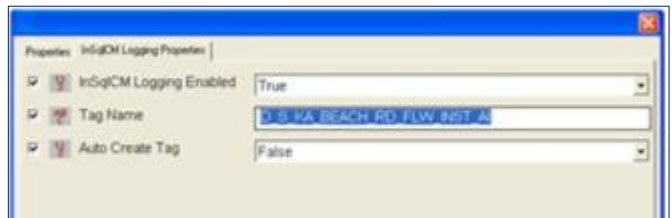
### DATRAN InSQLCM Configuration

The following screen shots demonstrate the sequence to get analogue DATRAN RTU logged data into InSQL via the DATRAN base station.

#### Step 1. Connect InSQLCM to InSQL

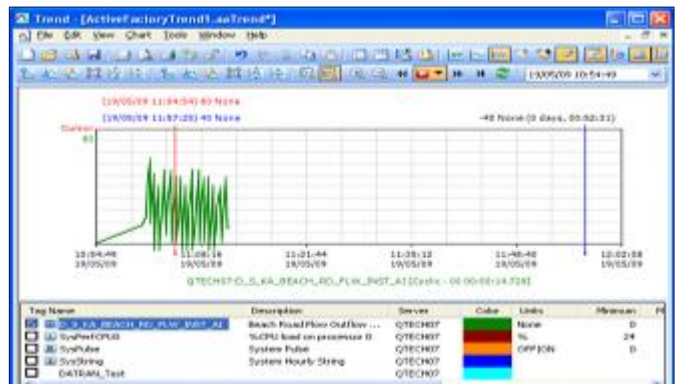


#### Step 2. Configure DATRAN Historical Data



#### Interface

Configure DATRAN Historical Data Interface (HDI) to log to the Wonderware InSQL Server.



#### Step 3. Example Output

This is a typical trend of the DATRAN VI analogue point being logged to InSQL when viewed in Active Factory Trend.

QTech offer a complete solution including installation and configuration.

Please contact us for a system implementation proposal.