



# DATRAN Supervisor

## Application Note

**DATRAN Supervisor**

Version 3.64 Supplementary

Revision 1



## Introduction

DATRAN Supervisor provides an easy to use interface for the complete alarm and system management for the DATRAN VI SCADA system.

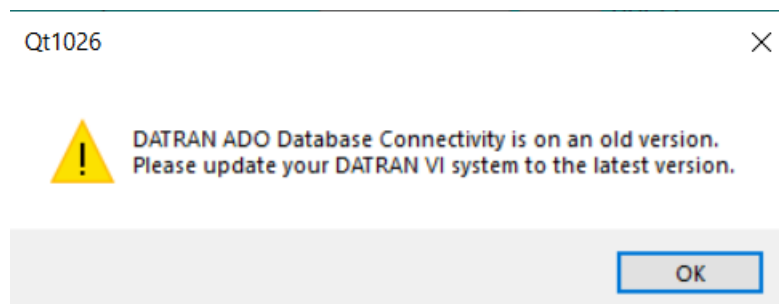
This Application Note provides supplementary information to the recent release of DATRAN Supervisor v3.64.

The following topics will be covered in this application note:

- Opening a Trend in Supervisor
- New Security Levels
- Exporting data to .csv file from SQL Alarm History Screen
- Custom Alarms Screen

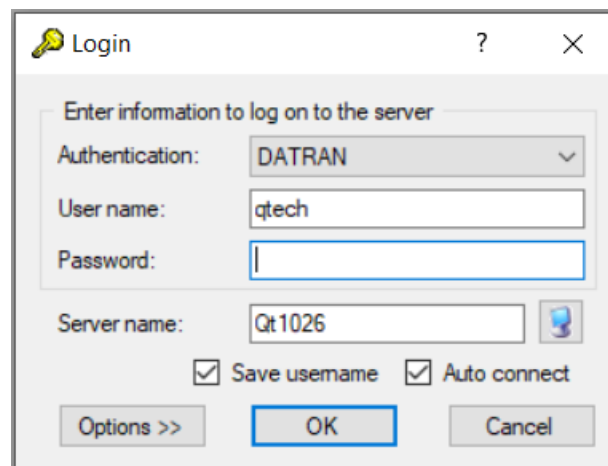
## Opening a Trend in DATRAN Supervisor

An issue has been found that, after logging into DATRAN Supervisor and the user wants to view a trend, the following message pops up:



When logging into DATRAN Supervisor, the log in screen selects the correct computer name, but does not use the correct case. In the example below it was supposed to use QT1026, but instead used Qt1026.

The correct Server name can be found in the DATRAN VI Browser.



No other issues have been found with other functions in DATRAN Supervisor.

## New Security Levels

This version added new security levels into the TCP Server properties:

- Alarm Suspend Start/Stop.

Implemented the new ability to enable/disable of Alarm Suspend buttons based on the TCP Server properties and current user security level and changed the Edit Buttons screen to support it. This now gives administrators the ability to allow specific operators to Suspend an alarm but not Disable or Enable.

## Exporting data to .csv file from SQL Alarm History Screen

The SQL Alarm history window now exports data properly to a CSV file when requested.

## Custom Alarms Screen

General information is found in the Supervisor help file. Having read that proceed with the steps below:

Step 1:

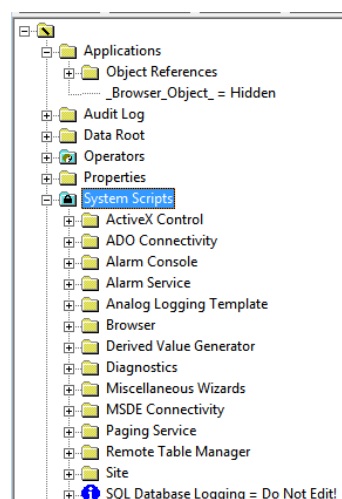
Open DATRAN VI Browser, you will note that the Tree layout has icons and the System Scripts node has a padlock icon. This means it cannot be edited. To make a Custom Alarms Screen we need to edit this node.

---

*Making mistakes in this area can result in DATRAN VI failing to operate or operate incorrectly. This is part of the “engine room” of DATRAN VI.*

*Please contact QTech support to implement if you are unfamiliar.*

---

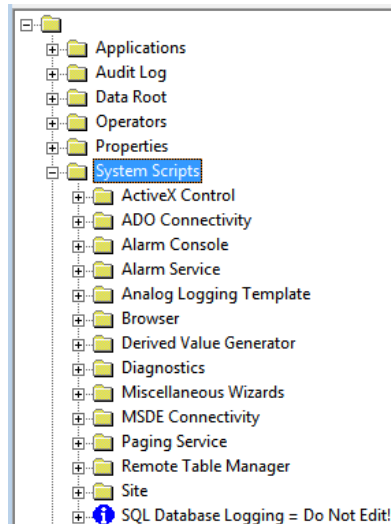


Step 2:

To put the System Scripts node into editable mode, enter the following key sequence:

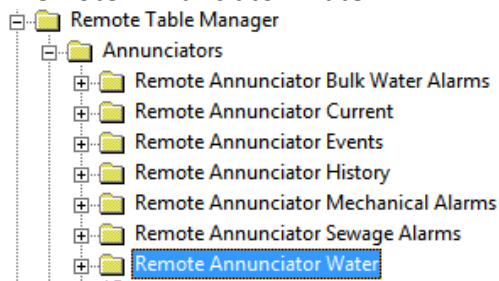
Ctrl + Alt + Right Shift + n

**A new window should open, now be very careful!**



Step 3:

At the Remote Table Manager  $\square$  Annunciators node press the Insert key. Enter a suitable name for a new annunciator e.g. “Remote Annunciator Water”

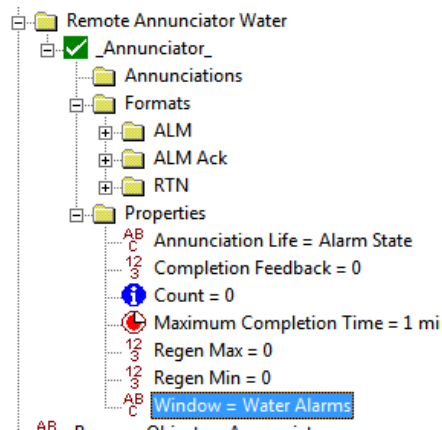


Step 4:

The easiest way to now proceed is to copy another annunciator and edit its settings. I copy the annunciator from “Remote Annunciator History” node and paste it into my new “Remote Annunciator Water” node

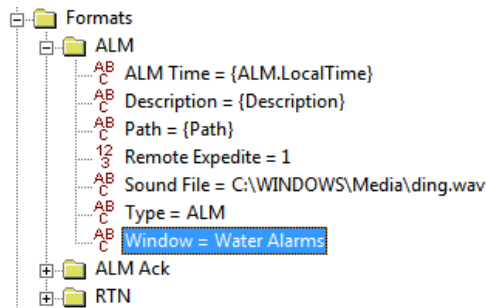
Step 5:

We added in a Properties -- Window = Water Alarms



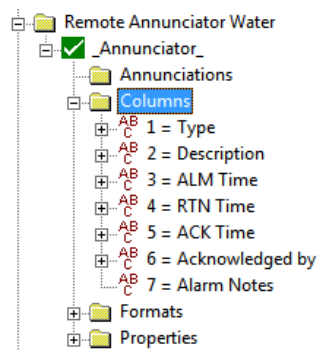
**Step 6:**

Change the ALM, ALM Ack, RTN nodes to suit what I want to happen. Note to change or add the correct “Window =”



**Step 7:**

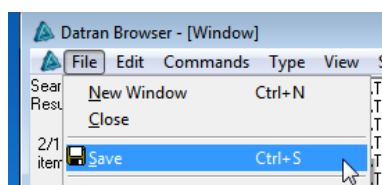
Add in a Columns node. This will determine what is displayed on your customised screen. Refer to the Supervisor help file under Customised Alarms Screens.



**Step 8:**

Save the file. <File><Save>. Then close the window.

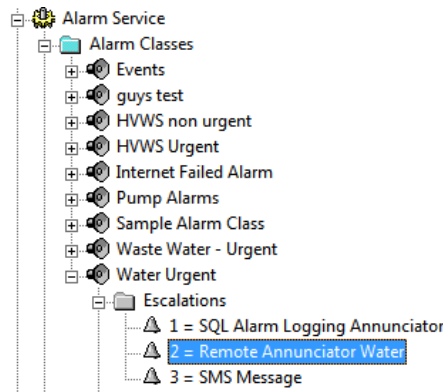
Hopefully, you have not accidentally deleted or changed anything else and your DATRAN VI will still work.



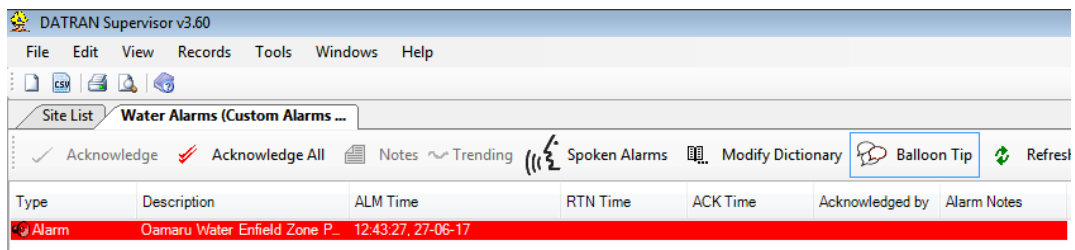
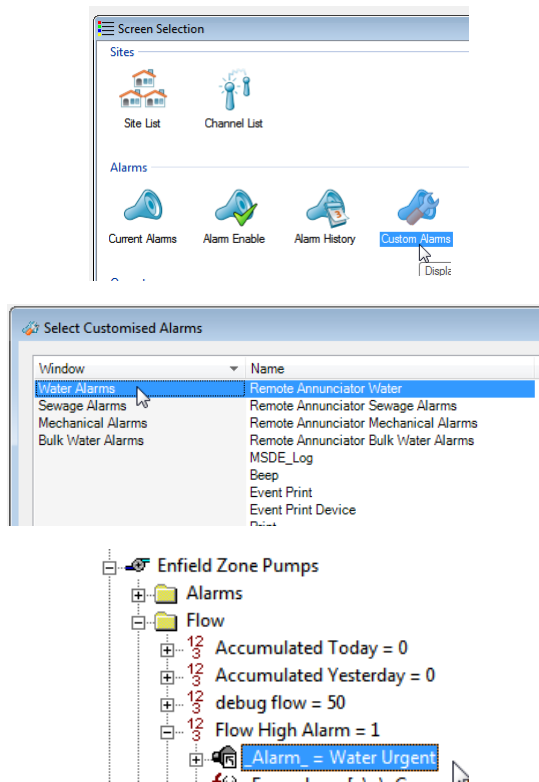


Step 9:

In any alarm class that you want the alarms to appear in your custom alarms screen, add in the “Remote Annunciator Water” to the escalation sequence.



EXAMPLE:



Our Sales staff are contactable through: [sales@qtech.co.nz](mailto:sales@qtech.co.nz)

Our Administration staff are contactable through: [admin@qtech.co.nz](mailto:admin@qtech.co.nz)

Our Technical Support staff are contactable through: [techsupport@qtech.co.nz](mailto:techsupport@qtech.co.nz)



QTech Data Systems Ltd

PO Box 9087, Christchurch 8149

12 Midas Place, Christchurch 8024

P: +64 3 366 3713