

Q48 POINT TO POINT SYSTEM



REMOTE CONTROL SOLUTION WITH 8 DIGITAL & 2 ANALOGUE I/O

The Q48 Point to Point (Q48 P2P) system is a remote control solution monitoring up to eight digital switches and two analogue sensors and controlling up to 8 digital relays and two analogue outputs per Q48 module.

Each Q48 P2P system comprises a pair of Q48 wireless modules that are preprogrammed with a unique common communication address, allowing multiple Q48 P2P systems to be used within the same location.

This system can be considered as a multicore cable replacement option, without the expense and hassle of trenching and installation.

Key Features

- 8 Digital Inputs, 8 Digital Outputs, 2 Analogue Inputs, 2 Analogue Outputs
- Simple set up, no programming or configuration required
- State of the art digital radio using 900MHz Digital Modulation technology
- Line of sight operational ranges of up to 2km with optional whip antenna, and up to 4km with optional Yagi antenna
- Low power consumption, ideal for solar or battery installations
- Output failsafe option



Application Examples

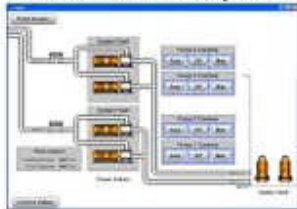
Dairy Farm Backing Gate Control



Irrigation System Control



Industrial I/O Expansion



Specifications

- Frequency 915MHz to 928MHz (in ISM Band)
- RF Output 250mW
- Antenna connector SMA
- Dimensions L 186 x W 120 x D 40 mm
- Steel and powder coated enclosure
- Power connector 3 way screw terminal
- Short circuit and reverse polarity protection
- Current Consumption 85mA nominal @ 12V DC
- Supply Voltage 12 - 24V DC (max 30V DC)

Mechanical Mounting

- 4 x M4 fixing holes at 177 x 84mm centres

Performance

- Outdoor line of sight up to ~2km with 3dB Whip antenna
- Outdoor line of sight up to ~4km with 6dB Yagi antenna
- Receiver sensitivity -110dBm

Note: Distances are indicative only and terrain dependent

Input & Outputs

- 8 x Switched Input (normally open, close to activate)
- 8 x Outputs contact (solid state type)
- 2 x Analogue 4-20mA Inputs
- 2 x Analogue 4-20mA Outputs
- High speed I/O - up to 5 changes of per second
- Analogue I/O optionally factory configured for 0-10V
- Total Max current for switched outputs 1.5A @32VDC
- Total Max current per switched output 1A @32VDC

Certification

- AS/NZS 4268:2008

Ordering details

Product Code: PD8630-P2P (Supplied as a Matched Pair)

Please refer to our website for further product information and optional accessories.

QTech Data Systems
 12 Midas Place Middleton
 Christchurch 8024

Phone +64 3 366 3713
www.qtech.co.nz
sales@qtech.co.nz

QTECH
 DATA SYSTEMS